

SPHINX ATROPOS.

CHARACTER GENERICUS.

Antennæ subprismaticæ, utroque fine attenuatæ.

Lingua exserta (plerisque.)

Palpi duo reflexi.

Alæ deflexæ.

CHARACTER SPECIFICUS, &c.

SPHINX alis primoribus griseis, posterioribus abdomineque luteis nigro-fasciatis, thorace macula craniolari flava.

SPHINX alis integris: posticis luteis fasciis fuscis, abdomine luteo cingulis nigris.

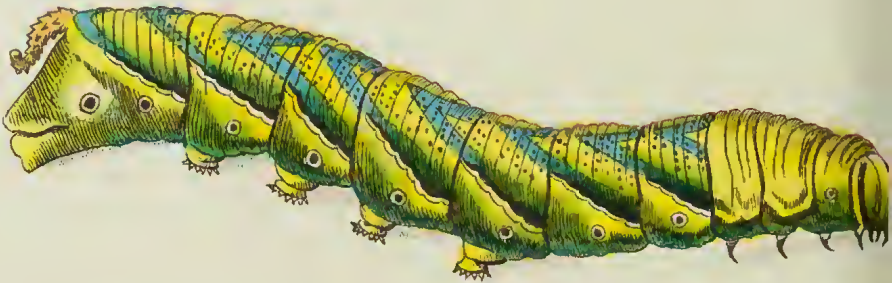
Lin. Syst. Nat. p. 799.

Varias Europæ regiones incolit formosissimum hoc insectum, et e rarissimis est lepidopteris quæ in Britannia aluntur. Hujus larva solani tuberosi nec non jasmini folia præ cæteris amat, et cum noctu præcipue veseatur, interdiu deliteat, eo fit ut difficilior sit detectu quam aliæ pleræque larvæ lepidopterorum. Mense Augusto, chrysalidis vices subitura sub humo se condit, unde mense Septembri insequentis anni prodit ipsa Sphinx, thoracem habens macula

maeula insignitum cuius possit esse quædam imaginaria similitudo eum cranio arido mortui hominis ut vulgo depingitur; quam ob causam, emissamque vocem stridulam, si quis tangendo irritaverit, indoctæ plebi magnum non raro timorem incutit quasi male ominata, et mortis prænuncia: immo narrat celeberrimus Reaumurius ipsas monachas Gallie cujusdam coenobii subitanea trepidatione fuisse percussas visa Sphinge quæ vespertina per fenestras involaverat.

Quod commune est aliis plerisque insectis, coloribus vel saturatoribus vel pallidioribus variat Sphinx Atropos.





THE
JASMINE SPHINX.

GENERIC CHARACTER.

Antennæ subprismatic, attenuated at each extremity.

Tongue generally exerted.

Feelers two, reflex.

Wings deflected.

SPECIFIC CHARACTER, &c.

SPHINX with the upper wings grey, the lower wings and abdomen deep yellow barred with black, and the thorax marked by a scull-shaped yellow patch.

The Tiger Hawk-Moth.

The Jasmine Hawk-Moth, or Death-Head Sphinx.

This highly beautiful insect is a native of many parts of Europe, and is numbered among the rarer species of British lepidoptera. The larva or caterpillar is observed to prefer the leaves of the Jasmine and the Potatoe to those of most other plants; and as it feeds principally by night, concealing itself during the day, is much less frequently seen than most

most other insects of its tribe. It retires under ground in the month of August, in order to undergo its change into a chrysalis, from which, in the month of September in the following year proceeds the complete insect, which is distinguished by a remarkable spot or patch on the thorax, bearing an imaginary resemblance to the figure of a scull or death's-head, as vulgarly represented. From this circumstance, joined to the stridulous tone which it utters when handled or irritated, it has been considered by the vulgar as an animal of ill omen, and as a messenger of fate. The celebrated Reaumur informs us that the members of a female convent in France were seized with general consternation on discovering one of these insects, which had accidentally flown in at one of the open windows during the evening. Like most other insects, it occasionally varies somewhat in colour, being darker or lighter in different individuals.